



Materialwelt

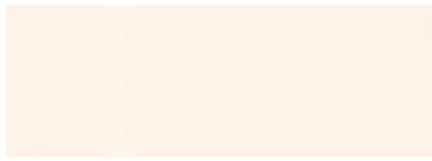
Colours and materials | Couleurs et matériaux



Dekore

Decors | Décors

Unifarbene Dekore | Plain-coloured decors | Décors unis



Jasmin
Ivory
Ivoire

U 11523 VV
141



Sandbeige
Sand Beige
Beige Sable

U 16003 VV
17



NEU: Puder
NEW: Powder
NOUVEAU: Poudre

U 16037 SD
161



NEU: Antilope
NEW: Antelope
NOUVEAU: Antilope

U 16012 SD
162



Salsa
Salsa
Salsa

U 16166 SD
148



Oxidrot
Oxide Red
Rouille

U 17271 SD
150



NEU: Atlantik
NEW: Atlantic
NOUVEAU: Océan Atlantique

U 18074 SD
163



NEU: Fjord
NEW: Fjord
NOUVEAU: Fjord

U 18501 SD
165



Zucchini
Zucchini
Zucchini

U 19504 SD
149



NEU: Avocado
NEW: Avocado
NOUVEAU: Avocat

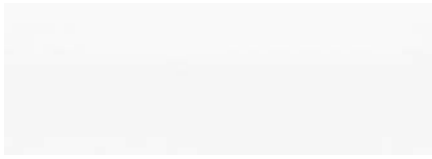
U 19503 SD
160



NEU: Congo
NEW: Congo
NOUVEAU: Congo

U 16002 SD
164

Unifarbene Dekore | Plain-coloured decors | Décors unis



Weiß
White
Blanc

U 11027 VV
05



Kristallweiß
Crystal White
Blanc Cristal

U 11026 SD
147



Office White
Office White
Office White

U 11525 VV
132



Weißgrau
White Grey
Gris Blanc

U 11500 VV
91



Lichtgrau
Light Grey
Gris Clair

U 12188 VV
01



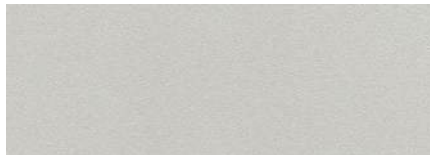
Anthrazit
Anthracite
Anthracite

U 12233 MP
30



Vulkanschwarz
Volcanic Black
Noir Volcan

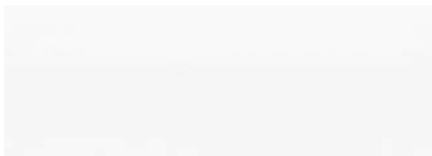
U 12000 SD
143



Weißaluminium
White Aluminium
Aluminium Blanc

F 70006 MP
39

Antifingerprint | No Fingerprint | Pas d'empreinte digitale



Weiß
White
Blanc

U 11027 XPSM
05XTp



Vulkanschwarz
Volcanic Black
Noir Volcan

U 12000 XPSM
143XTp

Dekore

Decors | Décors

Holzdekore | Wood decors | Décors bois



NEU: Halifax Eiche weiß H1176 ST10
NEW: Halifax Oak white
NOUVEAU: Halifax Chêne blanc 169



NEU: Casella Eiche natur H1385 ST19
NEW: Casella Oak natural
NOUVEAU: Casella Chêne naturel 168



Nordic Teak R 50094 NW
Nordic Teak
Teck Nordique 146



Altamira Walnut dunkel R 30013 NW
Altamira Walnut, dark
Noyer Altamira foncé 145



Graphitschwarz U 12007 NW
Graphite Black
Noir Graphite 151



Royaleiche R 20068 VV
Royal Oak
Chêne Royal 12



Lindbergeiche hell matt R 20021 NW
Lindberg Oak, pale matt
Chêne de Lindberg, clair mat 144



Ahorn hell R 27021 VV
Light Maple
Érable Clair 59



Königsahorn R 27001 VV
Royal Maple
Érable Royal 06



Buche natur R 24010 MO
Natural Beech
Hêtre naturel 07



Weißbuche R 24015 VV
White Beech
Hêtre Blanc 105



Calvados Apfel R 40001 VV
Calvados Apple
Pomme de Calvados 34



Kirsche edel R 42002 VV
Noble Cherry
Cerisier Noble 03

Synchronpore-Dekore | Synchronpore decors | Décors Synchronpore



NEU: Halifax Eiche weiß H1385 ST40
NEW: Halifax Oak white
NOUVEAU: Halifax Chêne blanc 169



NEU: Casella Eiche natur H1176 ST
NEW: Casella Oak natural
NOUVEAU: Casella Chêne naturel 168

Kantenband Dekor | Edge band decors | Bande de chant décor

18 / 19 / 25 mm



Analog Dekor wählbar
Selectable like decor
Analogue décor au choix



Multiplex Buche, 3D
Multiplex Beech, 3D
Multiplex Hêtre, 3D



Multiplex Silber, 3D
Multiplex Silver, 3D
Multiplex Argent, 3D

Kantenband MDF | Edge band MDF | Bande de chant MDF

16 mm



Analog Dekor wählbar
Selectable like decor
Analogue décor au choix



Anthrazit, 3D
Anthracite, 3D
Anthracite, 3D

Rollladen | Shutter | Volet roulant



Weiß, passend zu Weiß 05
White, suitable for White 05
Blanc, assorti à Blanc 05



Weißgrau, passend zu Weißgrau 91
White Grey, suitable for White Grey 91
Blanc Gris, assorti à Blanc Gris 91



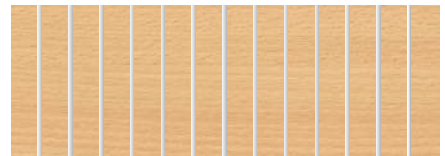
Lichtgrau, passend zu Lichtgrau 01
Light Grey, suitable for Light Grey 01
Gris Clair, assorti à Gris Clair 01



Silber
Silver
Argent



Anthrazit
Anthracite
Anthracite

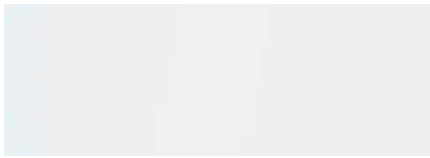


Buche
Beech
Hêtre

Glaslaminat

Glass laminate | Stratifié verre

REISS Subero® Deckplatte | Cover plate | Plaque de couverture



Oro Bianco



Luna



Torba



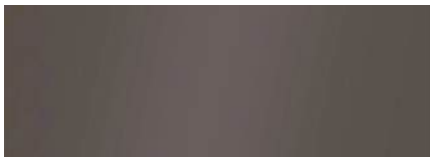
Aureo



Luminoso



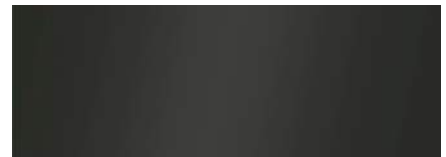
Titanio



Terriccio



Basalto



Galassia



Opale

Echtholz

Genuine woods | Bois véritable

REISS Trailo®



Esche natur, matt lackiert
Natural Ash, matt varnished
Frêne nature, peint mat



Eiche gekalkt, matt lackiert
Limed Oak, matt varnished
Chêne cérusé, peint mat



Eiche natur, matt lackiert
Natural Oak, matt varnished
Chêne nature, peint mat



Eiche schwarz gebeizt, matt lackiert
Oak stained black, matt varnished
Chêne noir décapé, peint mat

Dekor- und Farbauswahl entsprechend der einzelnen REISS Büromöbelprogramme. Geringfügige Farbabweichungen sind drucktechnisch bedingt.
Décor und colour selection according to the individual REISS office furniture programs. Slight colour deviations are due to the printing technology.
Choix de décors et de couleurs correspondant aux différentes gammes de meubles de bureau REISS. Les légères différences de couleur sont dues à la technique d'impression.



Farben

Colours | Couleurs



NEU: Schwefelgelb
NEW: Sulphur yellow
NOUVEAU: Jaune soufre
RAL 1016
110



Verkehrsgelb
Traffic Yellow
Jaune trafic
RAL 1023
106



Beigerot
Beige Red
Rouge Beige
RAL 3012
102



NEU: Perlgold
NEW: Pearl gold
NOUVEAU: Or nacr  
RAL 1036
108



Schilfgr  n
Reed Green
Vert Jonc
RAL 6013
103



NEU: Resedagr  n
NEW: Reseda green
NOUVEAU: Vert r  s  da
RAL 6011
111



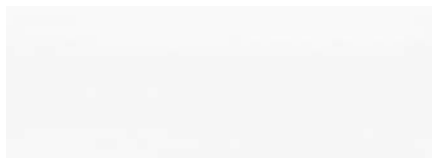
NEU: Gr  nblau
NEW: Green blue
NOUVEAU: Vert bleu
RAL 5001
112



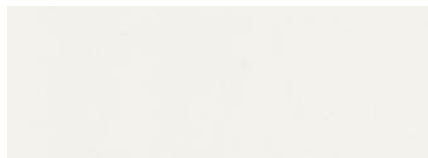
NEU: Pastellblau
NEW: Pastel blue
NOUVEAU: Bleu pastel
RAL 5024
109



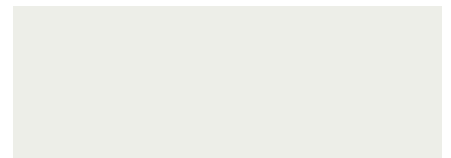
NEU: Perlorange
NEW: Pearl orange
NOUVEAU: Orange nacr  
RAL 2013
107



We   
White
Blanc
REISS 05
05



Grauwei  
Grey White
Blanc Gris
RAL 9002
83



Signalwei  
Signal White
Blanc de S  curit  
RAL 9003
104



Lichtgrau
Light Grey
Gris Clair
RAL 7035
01



Graualuminium
Grey Aluminium
Aluminium Gris
RAL 9007
90



Steingrau
Stone Grey
Gris Pierre
RAL 7030
92



Staubgrau
Dusty Grey
Gris Poussi  re
RAL 7037
02



Umbragrau
Umbra Grey
Gris Umbra
RAL 7022
101



Anthrazit
Anthracite
Anthracite
RAL 7016
61

Farben

Colours | Couleurs



Schwarz
Black
Noir

RAL 9011
09



Silber
Silver
Argent

RAL 9006
13



Anthrazitmetallic
Anthracite Metallic
Anthracite Métallique

REISS 63
63

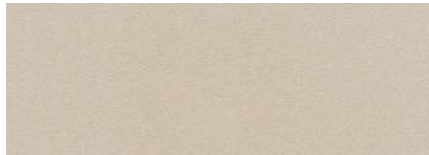


Chrome

Weitere Farben für Griffe (Schränke und Container) | Other colors for handles (cabinets and containers) | Autres couleurs pour les poignées (armoires et caissons)

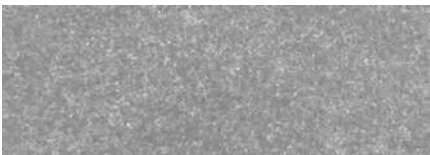


Chrom, matt
Chrom, matt
Chrome, matt

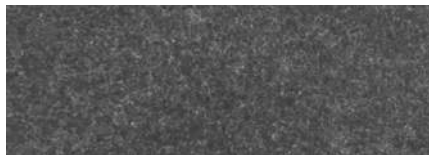


Nickel, matt
Nickel, matt
Nickel, matt

Formvlies | Formfleece | Voile de fond

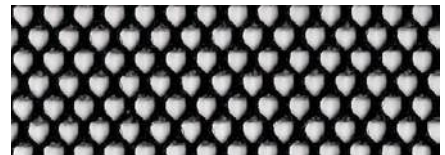


Anthrazit hell
Light Anthracite
Anthracite clair



Anthrazit dunkel
Dark Anthracite
Anthracite foncé

REISS Subero® Mesh als Rückwand | as a back wall | comme paroi arrière



Schwarz
Black
Noir

Polsterstoffe

Upholstery fabrics | Tissus d'ameublement

Camira Era

REISS Subero® Pads



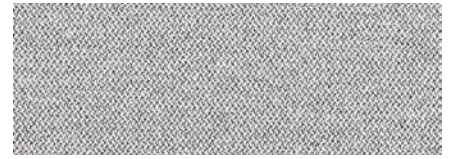
Forward

CSE14



History

CSE21



Memo

CSE46



Transition

CSE30



Splitsecond

CSE31



Occasion

CSE32



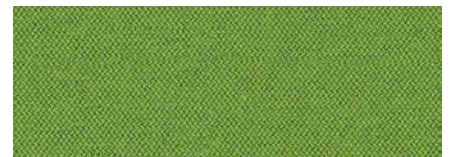
Endurance

CSE34



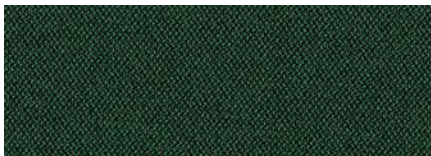
Period

CSE07



Timelapse

CSE16



Signature

CSE35



Everlasting

CSE10



Stage

CSE15



Maturity

CSE40



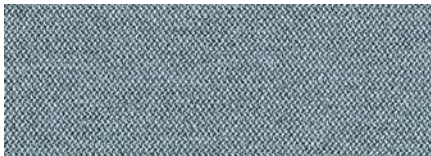
Range

CSE42



Elapse

CSE44



Late

CSE43



Prime

CSE09



Cycle

CSE06



Experience

CSE29



Span

CSE05

Polsterstoffe

Upholstery fabrics | Tissus d'ameublement

Camira Synergy

REISS Subero® Pads



Seek

LDS27



Bridge

LDS26



Mix

LDS17



Partner

LDS16



Cordial

LDS78



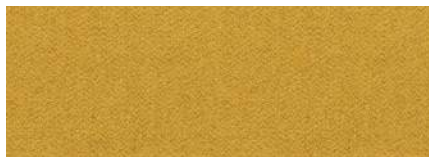
Loop

LDS18



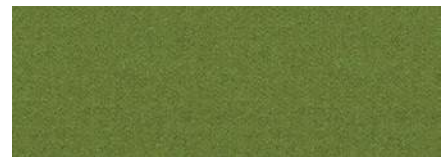
Level

LDS20



Lateral

LDS28



Integrate

LDS47



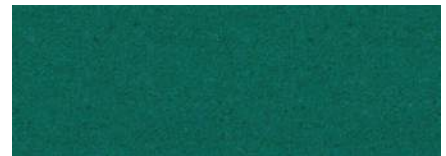
Intertwine

LDS42



Append

LDS49



Kindness

LDS51



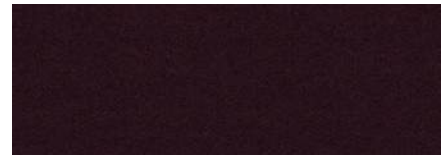
Support

LDS55



Engage

LDS57



Process

LDS88



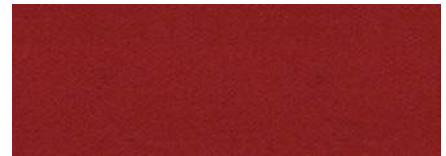
Warmth

LDS67



Compose

LDS72



Global

LDS86



Apt

LDS80



Contribution

LDS75

Polsterstoffe

Upholstery fabrics | Tissus d'ameublement

Camira Main Line Flax



Edgware

MLF28



Temple

MLF16



Redbridge

MLF61



Pinner

MLF60



Tooting

MLF17



Woodford

MLF67



Kentish

MLF56



Hornchurch

MLF55



Holborn

MLF05



Victoria

MLF19



Chigwell

MLF48



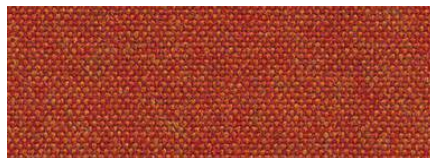
Parsons

MLF14



Barking

MLF45



Leyton

MLF13

REISS Subero® Pads



Whitechapel

MLF66



Upminster

MLF20



Tufnell

MLF18



Pimlico

MLF34



Embankment

MLF50



Aldgate

MLF01

Polsterstoffe

Upholstery fabrics | Tissus d'ameublement

Camira Penta

REISS Subero® Pads



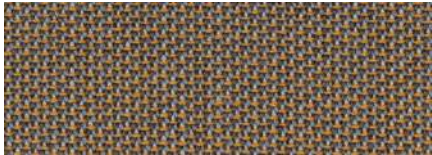
Shade PEN13



Tincture PEN14



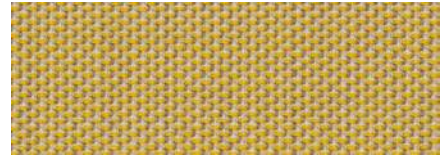
Hint PEN16



Optic PEN24



Light PEN20



Hue PEN21



Glow PEN19



Bright PEN08



Goethe PEN11



Newton PEN10



Spectral PEN09



Tempera PEN04



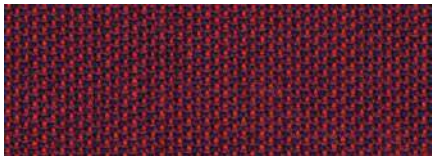
Prism PEN03



Saturation PEN06



Iris PEN25



Visual PEN27



Chroma PEN32



Radiance PEN28



Paint PEN30



Dominant PEN33



Era



Penta



Synergy, Main Line Flax

Garnfarben für Polster

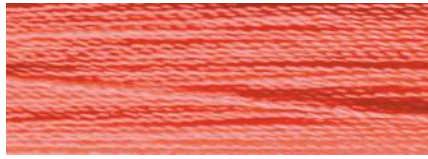
Yarn colours for upholstery | Couleurs de fil pour rembourrage

REISS Subero® Pads



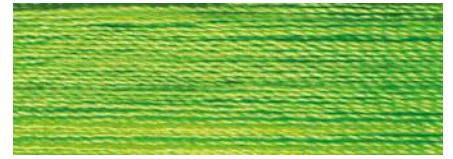
Neongelb
Neon Yellow
Jaune Néon

2719



Neonrosa
Neon Pink
Rose Néon

2906



Neongrün
Neon Green
Vert Néon

2706



Schwarz
Black
Noir

5080



Mittelgrau
Medium Grey
Gris moyen

5123



Beige
Beige
Beige

5089



Gelb
Yellow
Jaune

5101



Grün
Green
Vert

5110



Blau
Blue
Bleu

5032



Marineblau
Navy Blue
Bleu Marine

5120



Rot
Red
Rouge

5008



Orange
Orange
Orange

5073

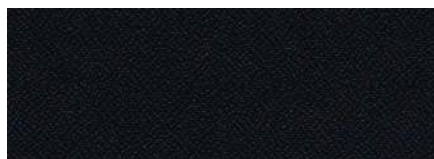


Akustikstoffe

Acoustic fabrics | Tissus acoustiques

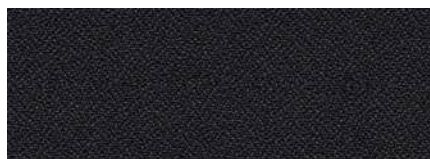
Camira Lucia

Preisgruppe 1 | Price group 1 | Groupe de prix 1



Havanna

LHA



Sombrero

LSB



Paseo

LPA



Blizzard

LBD



Tequila

LTQ



Buru

LBU



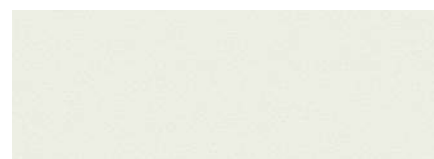
Slip

LSL



Rum

LRU



Adobo

LAD



Oyster

LOY



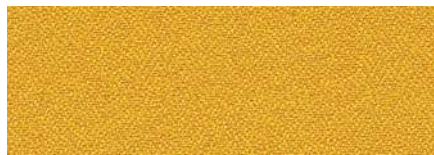
Aruba

LAU



Sandstorm

LSA



Solano

LSO



Apple

LAP



Madura

LMD



Campeche

LCA



Montserrat

LMO



Windjammer

LWJ



Steel

LST



Marianna

LMI



Bluebell

LBL



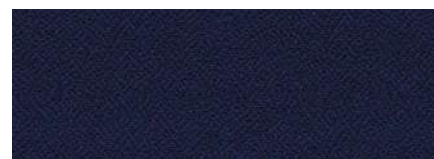
Martinique

LMA



Scuba

LSC



Ocean

LOC

Akustikstoffe

Acoustic fabrics | Tissus acoustiques

Camira Lucia

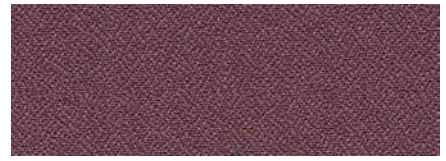
Preisgruppe 1 | Price group 1 | Groupe de prix 1



Costa LCO



Tarot LTR



Bridgetown LBR



Calypso LCL



Lobster LLO



Belize LBZ



Tortuga LTT

Camira Era170

Preisgruppe 2 | Price group 2 | Groupe de prix 2



Forward EFR



Quota EQU



Futurist EFU



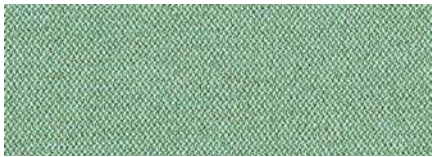
Transition ETR



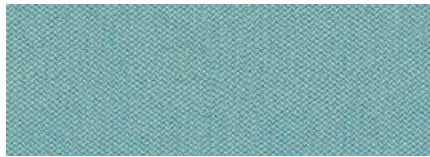
Splitsecond ESP



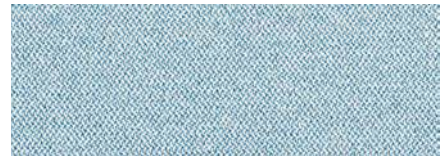
Analogue EAN



Notation ENO



Aeon EAE



Allowance EAL



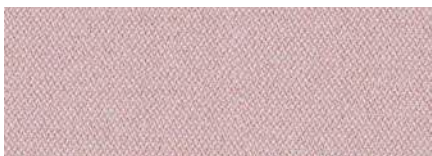
Range ERA



Forecast EFO



Occurrence EOU



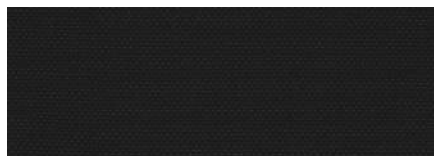
Calendar ECA

Akustikstoffe

Acoustic fabrics | Tissus acoustiques

Camira Quest

Preisgruppe 2 | Price group 2 | Groupe de prix 2



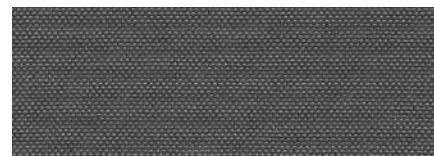
Depth

QUD



Mussel

QUM



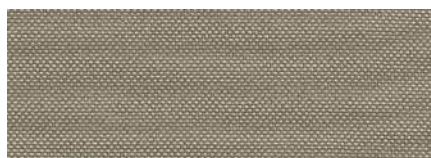
Quartz

QUQ



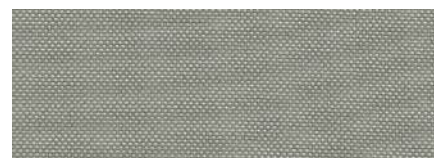
Shell

QUS



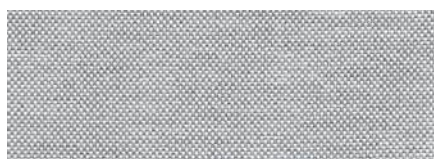
Peppel

QUJ



Fossil

QUF



Barnacle

QUB



Salt

QUX



Beach Comber

QUC



Sandstone

QUO



Driftwood

QUI



Sea Grass

QUG



Abalone

QUV



Algae

QUA



Kelp

QUK



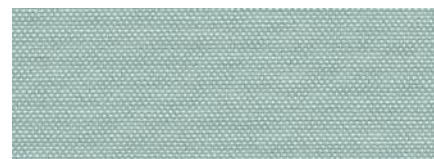
Sea Foam

QUE



Urchin

QUU



Ripple

QUR



Tide

QUT



Wave

QUN



Rock Pool

QUP



Whelk

QUW



Limpet

QUL



Cockle

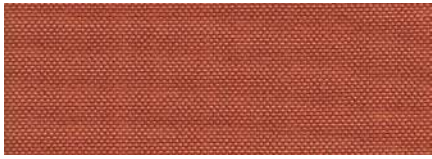
QUV

Akustikstoffe

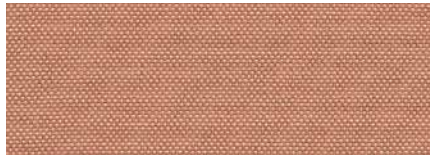
Acoustic fabrics | Tissus acoustiques

Camira Quest

Preisgruppe 2 | Price group 2 | Groupe de prix 2



Crab



QUZ

Shrimp



QUH

Clay

QUY

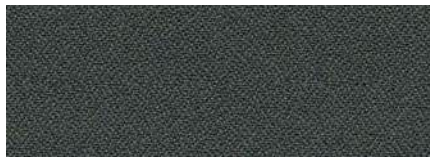
Camira Lucia CS (B1, DIN 4102)

Preisgruppe 3 | Price group 3 | Groupe de prix 3



Havana

BLHA



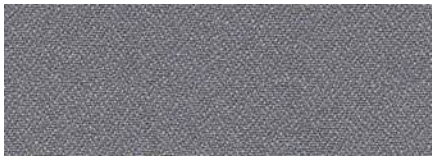
Revive

BLRV



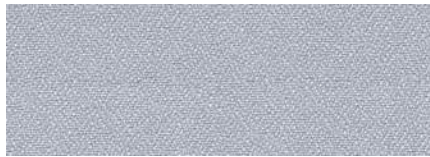
Blizzard

BLBD



Slip

BLSL



Rum

BLRU



Adobo

BLAD



Varadero

BLVA



Aruba

BLAU



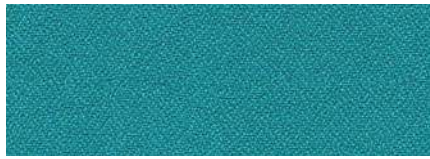
Kota

BLKO



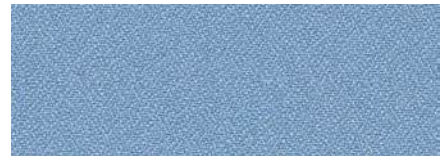
Tenom

BLTE



Depok

BLDE



Medan

BLME



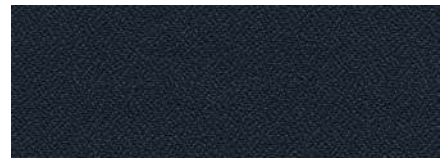
Roques

BLRO



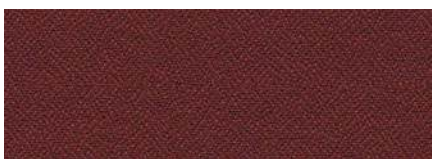
Makili

BLMK



Costa

BLCO



Negril

BLNE



Panama

BLPN

Akustikstoffe

Acoustic fabrics | Tissus acoustiques

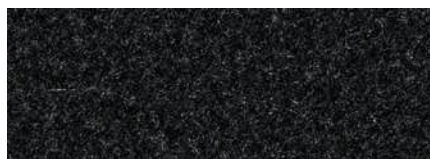
Camira Blazer Lite

Preisgruppe 3 | Price group 3 | Groupe de prix 3



Freedom

LTH69



Haven

LTH40



Solace

LTH70



Cuddle

LTH62



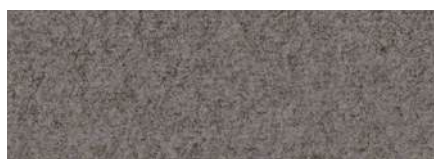
True

LTH61



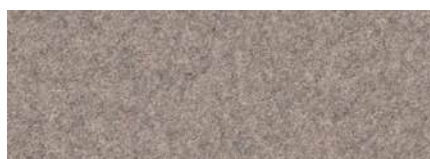
Affection

LTH1S



Kind

LTH1K



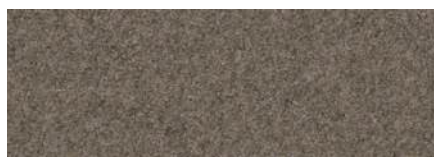
Daydream

LTH46



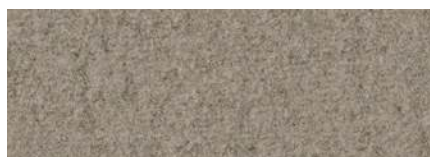
Retreat

LTH39



Tender

LTH53



Sympathy

LTH1L



Courtesy

LTH1R



Bliss

LTH48



Evoke

LTH1F



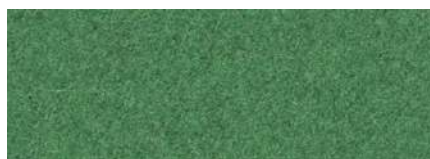
Buddha

LTH56



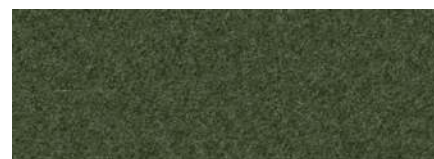
Happy

LTH55



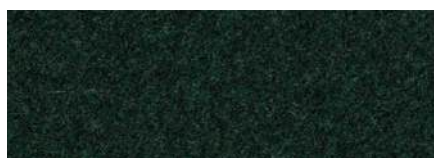
Graceful

LTH51



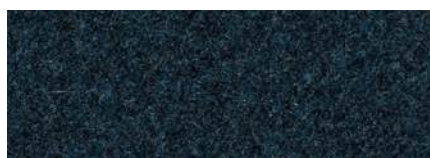
Shelter

LTH60



Fondness

LTH1Q



Respect

LTH1T



Hush

LTH42

Akustikstoffe

Acoustic fabrics | Tissus acoustiques

Camira Blazer Lite

Preisgruppe 3 | Price group 3 | Groupe de prix 3



Admire

LTH1C



Balance

LTH41



Forgive

LTH1G



Mood

LTH44



Faith

LTH68



Cheerful

LTH1E



Devoted

LTH58



Praise

LTH54



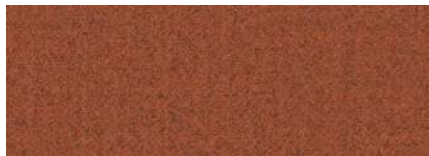
Aspire

LTH52



Delight

LTH1D



Compassion

LTH1A



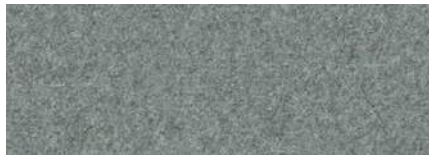
Gracious

LTH1N



Patience

LTH1M



Pillow

LTH43



Adore

LTH1J



Glee

LTH1H



Elation

LTH1B



Wish

LTH67



Benevolent

LTH1P



Dainty

LTH64



Harmony

LTH63

Akustikstoffe

Acoustic fabrics | Tissus acoustiques

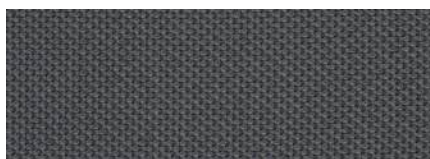
Camira RePlay

Preisgruppe 3 | Price group 3 | Groupe de prix 3



Climb

REP33



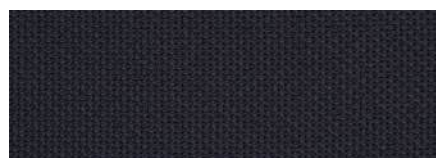
Twirl

REP29



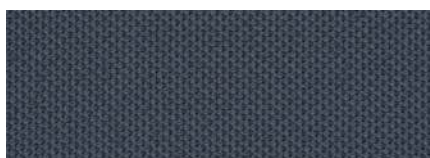
Sport

REP27



Swing

REP32



Dance

REP30



Catapult

REP28



Bounce

REP26



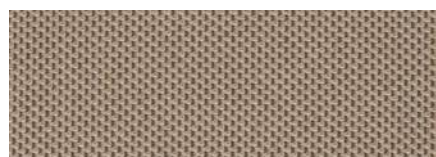
Skip

REP13



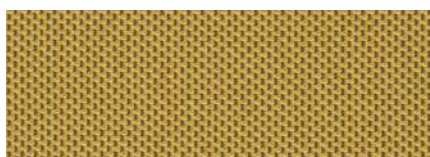
Jump

REP25



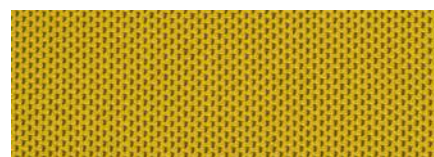
Hop

REP14



Lift

REP17



Push

REP16



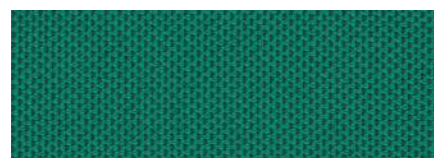
Motion

REP12



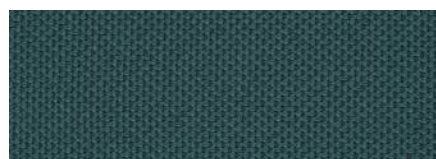
Freestyle

REP11



Step

REP10



Cheer

REP08



Joy

REP07



Handstand

REP09



Flex

REP01



Flip

REP06



Run

REP04



Jog

REP05



Agile

REP02



Athletic

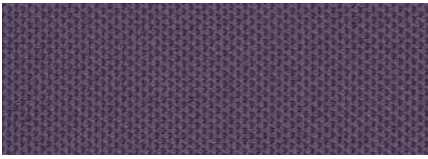
REP03

Akustikstoffe

Acoustic fabrics | Tissus acoustiques

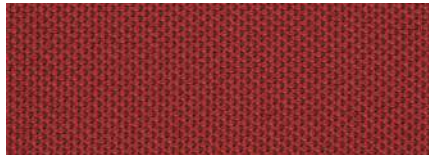
Camira RePlay

Preisgruppe 3 | Price group 3 | Groupe de prix 3



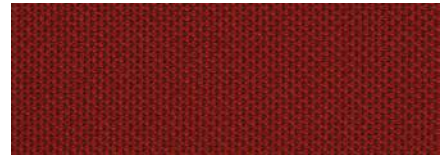
Throw

REP31



Game

REP22



Move

REP21



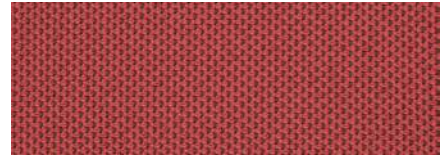
Workout

REP24



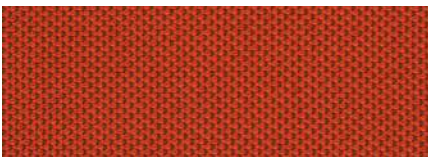
Active

REP23



Play

REP20



Fun

REP19



Roll

REP18



Pull

REP15



Era170, Lucia CS



Lucia, Quest¹, RePlay



Blazer Lite, Quest¹, RePlay²

Feuersicherung: Alle Stoffe entsprechen der Brandschutznorm BS 476 Part 7, Class 1. Zusätzlich erfüllt Lucia CS die Klassifizierung B1 nach DIN 4102 (schwer entflammbar).

1 Ocean Waste Clean Impact Textiles®: Herstellung aus gesammelten Plastikabfall aus dem Meer im Rahmen der SEAQUAL™-Initiative
2 Hergestellt aus 100 % recyceltem Polyester aus Altprodukten und ohne TCPP.

Fire safety: All fabrics comply with fire safety standard BS 476 Part 7, Class 1. Lucia CS also meets classification B1 according to DIN 4102 (flame retardant).

1 Ocean Waste Clean Impact Textiles®: Made from plastic waste collected from the sea as part of the SEAQUAL™ initiative
2 Made from 100% recycled polyester from old products and without TCPP.

Sécurité incendie : tous les tissus sont conformes à la norme de sécurité incendie BS 476 Partie 7, Classe 1. De plus, Lucia CS répond à la classification B1 selon la norme DIN 4102 (difficilement inflammable).

1 Ocean Waste Clean Impact Textiles® : fabriqué à partir de déchets plastiques collectés dans les océans dans le cadre de l'initiative SEAQUAL™
2 Fabriqué à partir de polyester 100 % recyclé issu de produits usagés et sans TCPP.



REISS ist zertifiziert nach dem Qualitätsmanagementsystem (DIN EN ISO 9001), dem Umweltmanagementsystem (DIN EN ISO 14001), dem Produktketten-Zertifikat PEFC-CoC sowie EMAS III.

Technische Änderungen vorbehalten.

REISS is certified in accordance with the quality management system (DIN EN ISO 9001), the environmental management system (DIN EN ISO 14001), the product chain certificate PEFC-CoC and EMAS III.

Subject to technical changes.

REISS Büromöbel GmbH est certifiée conformément au système de gestion de la qualité (DIN EN ISO 9001), au système de gestion de l'environnement (DIN EN ISO 14001), au certificat de chaîne de production PEFC-CoC et à EMAS III. Sous réserve de modifications techniques.

Hersteller | Manufacturer | Fabricants

REISS Büromöbel GmbH
D-04924 Bad Liebenwerda

+49 35341 48-360
info@reiss-bueromoebel.de

www.reiss-bueromoebel.de

Mitglied im Industrieverband Büro- und Arbeitswelt e.V. (IBA)

Member of the Industrial Association of Offices and Work Environment (IBA)